



B20 South Africa Led from Africa, Shared with the World

Legacy Initiatives



Reducing the Cost of Capital for Africa

Unlocking affordable capital to accelerate Africa's growth

Initiative at a glance

A cross-sectoral coalition backed by Standard Bank, Africa Finance Corporation, APRM, Africa Practice, ONE Campaign, and partners to lower Africa's **cost of capital** by delivering a **Blueprint for Action** comprising initiatives under four pillars:

- 1. Capacitating governments:** Strengthening the ability of African sovereigns to engage with global markets and ratings analysts.
- 2. Multilateral coordination & innovation:** Driving coordinated African engagement in global forums and financial institutions to advance policy reforms that address the structural high cost of capital for African sovereigns and create a fairer, more equitable, and representative global financial system that serves the young world. Promoting the development and deployment of innovative and blended financing instruments that mitigate risk and diversify funding sources for African economies.
- 3. Data and research:** Improving the quality and availability of African financial and economic data; championing a shift to openness and data and research that is accurate and timely.
- 4. Advocacy:** Reshaping Africa's global perception from one of "risk and assistance" to one of "opportunity and investment" through evidence-based campaigns and narratives.

"It is our resolution to advance concrete, African-led solutions that unlock capital for the continent's development. Our proposed initiatives are designed to address both external constraints and perceptions, and internal capacity gaps that perpetuate the high cost of capital."

- Sim Tshabalala,
Group CEO of Standard Bank Group

Partners & contributors

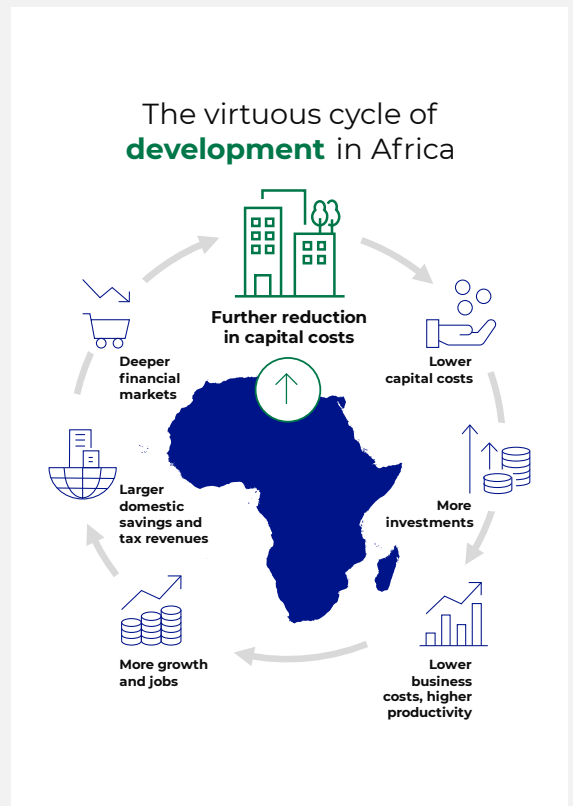


africapractice



How to engage

Marcus Courage
CEO, Africa Practice
financing.africa.forward@africapractice.com
www.financingforward.africa



Milestone & timeline

Date	Milestone / Activity
Nov 2025	Establish a secretariat to coordinate the coalition's advocacy and marshal the technical and financial resources to deliver The Blueprint for Action.
2026	Risk Return Data Hub (ONE Campaign and Data Commons) Sovereign Capacity Platform (Aston University and UN University for Research) Africa Confidence Campaign (Africa Finance Corporation) Blended Finance Task Force (AAMFI)
2027 onward	See here for more information. www.financingforward.africa

The coalition is seeking grant financing and strategic partnerships for research and implementation.

Africa at the Core of Critical Minerals Collaboration

Building sustainable value chains for a global clean-energy future

Initiative at a glance

A B20–World Economic Forum collaboration unites global and African leaders to accelerate sustainable investment and value creation in Africa’s critical minerals sector through coordinated global collaboration.

Core activities

- Engaging stakeholders to align priorities ahead of the B20 South Africa Summit
- Identifying enablers across policy, investment, infrastructure, and labour
- Sharing best practices to showcase viable models such as cluster approach

Why it matters


Africa holds vast critical mineral resources, yet its markets remain small, fragmented, and often opaque.

High capital requirements for mining and infrastructure limit governments’ ability to invest, making private capital vital. However, limited domestic demand, high risk perceptions, and business challenges hinder access to such capital.

Without targeted interventions, these barriers may continue to deter needed investments.

A sustainable path forward involves fostering business and policy environments that reduce risks, improve transparency, and strengthen regional coordination—helping position Africa as a strategic partner in the evolving global critical minerals landscape.

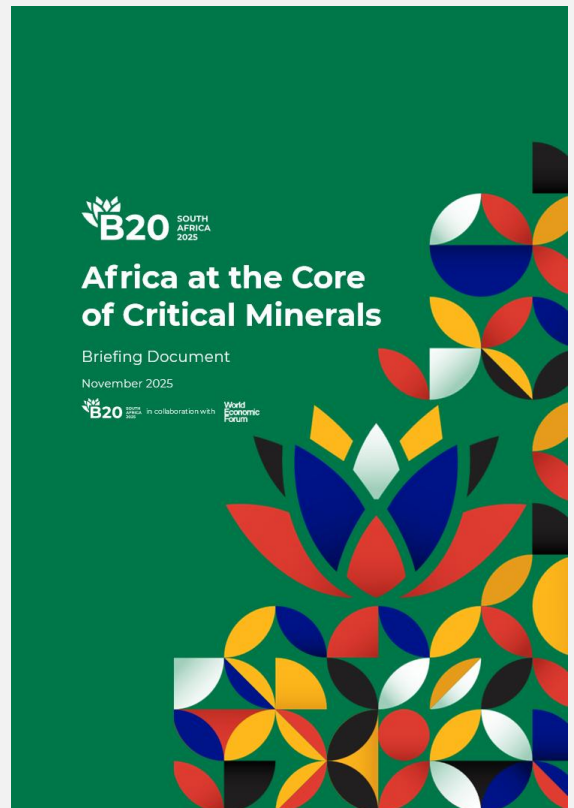
Partners & contributors

In collaboration with 

How to engage

Hang Vu | World Economic Forum
Hang.Vu.ext@weforum.org

Marina Colombo | World Economic Forum
Marina.Colombo@weforum.org



Milestone & timeline

Date	Milestone / Activity
Oct 2025	Virtual workshop defining policy roadmap
Nov 2025	Joint briefing paper, and B20 Summit event

“Our continent is abuzz with activity for the metals and minerals needed to enable the development and advancement of the economy and our society, as well as enable the energy transition to a low carbon future.”

- Mzila Mthenjane,
CEO Minerals Council South Africa

Please contact us should there be interest in engaging on topics related to critical minerals, including:

Knowledge partnerships through roundtables or thought leadership contributions (e.g., agenda blogs on critical minerals)

Community participation to support the development of critical minerals value chains across different countries.

Transforming Mining-Dependent Economies into Sustainable Economic Hubs

Advancing economic diversification

Initiative at a glance

A multi-stakeholder initiative repurposing unmined and post-mining land into sustainable economic hubs through, inter alia, land rehabilitation, renewable energy, agri-processing, and local enterprise development.

Core activities

- Encourage investment in successive industries
- Coordinate the current scattered initiatives by different stakeholders (government, businesses etc) so that there is an integrated approach to scaling select industries aligned to regional and national development plans
- Pilot and scale projects in industries such as agriculture, in target regions
- Mobilise blended and innovative finance models aligned with the Just Transition framework and sector growth priorities
- Create and demonstrate scalable playbook for regional regeneration, skills development and job creation through integrated value chains and ecosystems

Why it matters

As global decarbonisation accelerates and mines remain inherently finite, mining regions face rising risks of closure, economic decline, and job loss. Yet this transition also opens powerful opportunities — from unmined and mined land to mine water and infrastructure — that can be repurposed into engines of sustainable growth. It calls for early planning while mines are still operational, pooling resources and infrastructure to drive coordinated regional renewal.

Partners & contributors



Sector Priorities

Industry suitability should be informed by local resources and conditions, focusing on sectors that capitalize on regional strengths and existing assets with these industries generally most viable:



Agriculture & agro-processing:

Restore land and repurpose mine water and unused assets for irrigation and processing



Renewable energy (solar/wind):

Priority given to large areas with grids and roads, where location outweighs soil quality



Tourism & conservation:

Revitalize sites to transform into key nature-based attractions



Manufacturing & industrial parks:

Existing infrastructure (e.g., power, warehouses) reduces entry costs

Milestone & timeline

Date	Milestone / Activity
2025	Framework finalised.
Early 2026	2 or 3 pilots chosen to be scaled.
Mid-2026	Investment Compact signed.
Late 2026	Forum convened.
2027 onward	Expansion across mining regions.

"This initiative translates the potential for liability at the end of mine life to a real asset opportunity that continues to support livelihoods"

How to engage

Mzila Mthenjane

CEO
Minerals Council South Africa
mmthenjane@mineralscouncil.org.za

Support needed:

- Financing
- Knowledge partnership

South African Food Loss & Waste Initiative

Reducing waste, feeding more people

Initiative at a glance

A partnership reducing food waste, improving food security, and promoting circular-economy practices by harmonising data collection, policy, and redistribution systems across agriculture and manufacturing sectors.

Core activities

- Establish national food-waste baselines and data-tracking platform
- Conduct farmer-to-retailer training on planning and forecasting
- Promote cold-chain and storage innovation to reduce spoilage
- Run public campaigns on food-waste awareness and date-label use
- Align with National Food Loss and Waste Strategy and SDG 12.3
- Support redistribution of surplus food through policy and logistics improvements

Why it matters

South Africa faces a significant challenge with food loss and waste, discarding approximately 10 million tonnes of food annually, which is about one-third of all food produced in the country. This occurs primarily early in the supply chain, including during harvesting, storage, transportation, and distribution. The most affected commodities are fruits, vegetables, and cereals, which together account for 70% of the total food waste.



Milestone & timeline

Date	Milestone / Activity
2025	Policy and regulation adjustments and investment calls in technology and innovation
Q1 2026	Improvement in measurement of food loss and waste
Q2 2026	Integrating FLW reduction into government policy and plans

“Keeping food safe and reducing waste is not just a technical challenge—it’s a shared responsibility to protect health, build trust, and safeguard our planet”

Partners & contributors

Consumer Goods Council of South Africa and WRAP



How to engage

Linda Drummond
lindad@cgccsa.co.za

Knowledge partnership

BloombergNEF Academy South Africa

A fast-track executive program on the energy transition and its global opportunities for nominated leaders

Initiative at a glance

An executive education programme by BloombergNEF to equip senior leaders with knowledge, networks, and tools to navigate the energy transition and lead low-carbon economic transformation across Africa.

Core activities:

- Host inaugural Academy sessions in 2026
- Deliver modules to educate leaders from the public and private sector about opportunities in the transition to a low-carbon economy
- Facilitate peer-to-peer dialogues and mentorship among African leaders to create a community of leaders in key sectors of the low-carbon economy, that supports knowledge sharing and business opportunities

Why it matters

Rapid industrial change and decarbonisation require leaders who understand technology, finance, and policy. The BNEF Academy equips public and private sector executives with the skills to drive Africa's green transition.



Milestone & timeline

Date	Milestone
Nov 2025	Formal announcement at B20 Summit
1H 2026	First cohort started
2027	Alumni network expanded across Africa

"Across markets, business leaders are recognising the need to focus on the energy transition across all sectors. The BNEF Academy equips executives with the insight and networks to turn this shift into opportunities."

- Jon Moore,
Chief Executive Officer, BloombergNEF

Partners & contributors

BloombergNEF

How to engage

Maria Eugênia Mitri
Regional Business Development Associate,
BloombergNEF
mmitri2@bloomberg.net

The BloombergNEF Academy South Africa will support the B20 as a knowledge partner, ensuring the program's content aligns with current and future B20 recommendations on an ongoing basis.

Carbon Knowledge Hub for Carbon Market Insights

Demystifying carbon markets for climate action

Initiative at a glance

An open-access platform by BloombergNEF providing actionable insights, data, and education on global and African carbon markets and taxes to enhance transparency, participation, and climate finance literacy. Originally created for B20 Indonesia, the Knowledge Hub also supported B20 Brazil.

Core activities

- Expand Hub coverage to include content on African carbon markets and taxes, and relevant issues for emerging markets
- Publish quarterly factsheets on pertinent topics and BloombergNEF research
- Maintain interactive “Data Tracker” with carbon prices and other data
- Host webinars and expert dialogues on compliance and voluntary markets
- Collaborate with B20 partners for thought leadership contributions
- Feature content during B20 Summit events to promote accessibility

Why it matters

Carbon markets and taxes are rapidly evolving but lack transparency, standardisation and credibility. Africa’s nascent programs require robust knowledge and data to strengthen local capacity, attract investment and achieve climate pledges.

“By providing accessible and credible information, the Knowledge Hub will help carbon markets play a bigger role in raising climate finance and driving the energy transition.”

- **Jon Moore**, Chief Executive Officer, BloombergNEF

“The cooperation with BloombergNEF as the managing partner of the Carbon Knowledge Hub is a way to drive cross-country collaboration supported by various global industry leaders and multinational organizations that are contributing and supporting partners.”

- **Shinta Kamdani**, Chair of B20 Indonesia

Partners & contributors

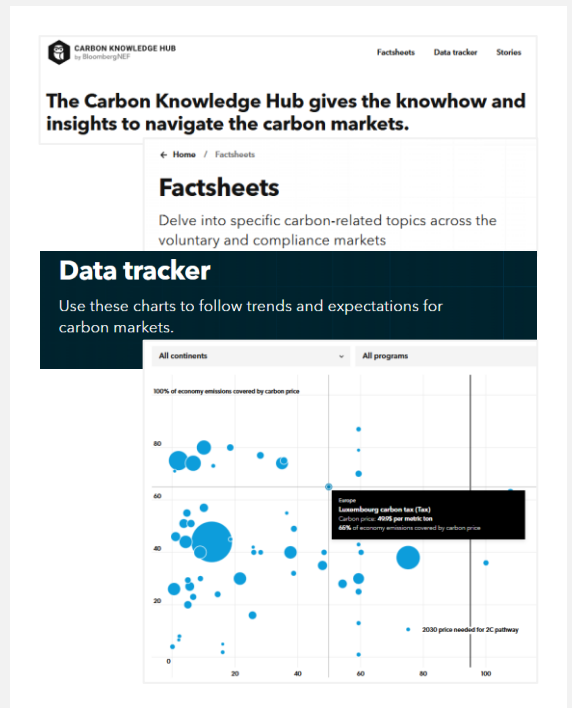
BloombergNEF

20 BRASIL 2024
INCLUSIVE GROWTH FOR A SUSTAINABLE FUTURE

B20 INDONESIA 2022

INDONESIAN CHAMBER OF COMMERCE AND INDUSTRY

ASEAN INDONESIA 2023
Economic Community



Milestone & timeline

Date	Milestone
Nov 2025	Launch South Africa factsheet and B20 recommendations
2026 Q1	Expand list of supporting and contributing partners
2026 Q2	Publish additional factsheets covering the latest carbon markets developments in South Africa and Sub-Saharan Africa

How to engage

Contact sales.bnef@bloomberg.net with any inquiries and to be alerted when new content is added to the Carbon Knowledge Hub.

The Carbon Knowledge Hub helps stakeholders navigate risk and identify opportunities as carbon markets expand globally. Supporting the B20 as a knowledge partner will ensure the information presented on the Hub is used by senior decisionmakers across Africa.

From South Africa to the U.S. and Beyond: Business–Philanthropy Legacy Partnership

Bridging business and philanthropy to finance inclusive growth

Initiative at a glance

A WINGS–Anglo American Foundation–led initiative to institutionalise collaboration between business and philanthropy, mobilising catalytic capital and structured cross-sector partnerships to drive long-term systemic impact aligned with B20 priorities across presidencies

Core activities

- Formalise philanthropy’s engagement framework within the B20 process
- Build structured spaces for deeper collaboration and thought leadership by convening high-level dialogues at global and national levels
- Develop and launch Aséli Impact Capital, a permanent-capital fund
- Publish strategic note and policy briefs on philanthropy, innovative financing mechanisms and partnerships
- Pilot cross-sector partnership mechanisms
- Coordinate handover to U.S. philanthropy for continuity in 2026

Why it matters

Development finance reforms and declining aid underscore the need for stronger alliances that mobilise private and philanthropic capital.

However, collaboration remains fragmented with no structured space for these sectors to align efforts, share insights, or define philanthropy’s strategic role beyond gap-filling.

Partners & contributors



WINGS UNGA event, Sept 2025
“Catalytic Philanthropy” alongside sector thought leaders including Cas Coovadia, B20 South Africa Sherpa

Milestone & timeline

Date	Milestone
2025	UNGA side event, IPASA conference, multiple B20 legacy events
2026 Q1	Launch the Aséli Impact Capital fund
2026 Q2	Host convenings such as post-G20 showcase, and embed philanthropy’s formal engagement within the B20 process, continuation under U.S. B20 presidency; philanthropy sector recommendations and evidence to the B20

“For the first time, philanthropy and business are coming together to build a partnership architecture that endures across B20 presidencies: creating continuity, driving catalytic investment, and shaping a long-term development agenda.”

- Benjamin Bellegy, Executive Director, WINGS
- Michael Mapstone, CEO, Anglo American Foundation

How to engage

Sameera Mehra

Collective Intelligence and Advocacy Director, WINGS,
smehra@wingsweb.org

Strategic partnership from the B20 in the form of knowledge partnership, visibility, policy alignment and partnership brokering, enabling the mobilisation of catalytic capital and cross-sector collaboration.

Global Solutions Exchange on Youth Pathways to Earning

Connecting innovation in youth employment across borders

Initiative at a glance

A global platform sharing scalable models to tackle youth unemployment by replicating South Africa's pathways-to-earning approach across G20 and developing economies through public-private collaboration.

Core activities

- Convene global working group (Johannesburg, June 2026)
- Host inaugural Solutions Exchange event (Cape Town, Sept 2026)
- Share data and best practices from SAYouth and partner countries
- Co-develop public-private solutions for youth skilling and job matching
- Facilitate collaborations between governments, business, and multilateral partners
- Promote replication of effective labour-market models globally

Why it matters

Youth unemployment is a shared and growing challenge across many G20 countries as well as most middle-income and developing countries – especially in Sub-Saharan Africa. Countries need to share models and solutions to tackling youth unemployment to enable them to respond with urgency to avoid social instability and achieve a generational dividend.

The exchange creates a shared learning platform for policies and digital tools that match young people to opportunities and skills pipelines.

Partners & contributors

BUSA, BLSA, SA
Presidency, World Bank



How to engage

Nicola Galombik

Executive Director, Yellowwoods
Co-chair, B20 Working Group on Employment and Education
Contact via: Nompilo Mtunzi (Programme Manager, Yellowwoods)
— nompilo@yellowwoods.biz



Milestone & timeline

Date	Milestone
Nov 2025	Convening Partners confirmed.
Jun 2026	Working Group meeting (Johannesburg).
Oct 2026	Inaugural Global Solutions Exchange (Cape Town).

"Africa's youth are its most powerful renewable resource. If we invest in them with urgency and purpose, they will power inclusive and sustainable growth across the continent."

- Ngozi Okonjo-Iweala,
Director-General of the World Trade Organization

To ensure a high-impact Global Solutions Exchange on Youth Pathways to Earning, we are requesting B20's partnership in three areas: knowledge partnership and the convening of global and regional stakeholders

Beyond Collaboration Platform

Collective solution to systemic sustainability challenges

Initiative at a glance

A cross-sector partnership strengthening South Africa’s water and infrastructure resilience through targeted, transparent collaboration between business, government, and communities to secure sustainable resources and restore confidence in essential services.

Core activities

- Strengthen public–private collaboration
- Enhance reliability of critical infrastructure and sustainable supply of key resources such as water and energy
- Improve governance through transparent, accountable partnerships
- Identify priority regions and define programme scope with local authorities
- Implement a focused pilot to test and demonstrate impact
- Establish a multidisciplinary steering committee to oversee delivery, monitor progress, and guide scaling of successful interventions
- Ensure measurable outcomes and long-term sustainability.

Why it matters

South Africa faces mounting infrastructure and resource management challenges, including frequent power cuts, water shortages, and systemic inefficiencies caused by aging systems and underinvestment. These issues disrupt businesses and communities, while climate change intensifies the strain.

Without urgent, coordinated action between government and the private sector, the country’s water security, energy stability, and long-term economic resilience remain at serious risk.

Partners & contributors



Mining



Manufacturing



Financial Services



Milestone & timeline

Date	Milestone
2025 (pre summit)	Identify priority regions, engage stakeholders, establish a steering committee, and secure funding for a pilot water resilience project
2025 Nov	Launch pilot intervention and present a scalable implementation framework for broader replication
2026	Finalise pilot rollout, monitor and review progress, and refine the model for expansion and long-term sustainability.

“At SAB, we are committed to be the catalyst of collective action to tackle key systemic sustainability challenges.”

- Zoleka Lisa,
VP Corporate Affairs, SAB

How to engage

Barbara Copelovici
Corporate Affairs Director,
South African Breweries
Barbara.Copelovici@za.ab-inbev.com

Expand partnership and pool resources for deeper impact at scale

Special Report on Youth, Women, and SMMEs in Trade

Unlocking inclusive participation in global and regional trade

Initiative at a glance

The objective of this initiative is to identify and address barriers faced by underrepresented groups, namely youth, women and MSMEs, in accessing global trade. The findings will inform policy actions that promote greater inclusivity and participation in international commerce, grounded in stakeholder input and aligned with G20 priorities.

Thematic focus areas include

- Procedural and regulatory barriers
- Access to trade finance
- Digital trade and visibility
- Capacity-building and market readiness
- Identification and access to new markets

Why it matters

African SMEs—particularly those led by women and youth—remain underrepresented in cross-border trade due to limited access to finance, fragmented support systems, complex procedures, and weak digital integration. This has created a persistent participation gap and untapped growth potential under the AfCFTA.

The initiative tackles these barriers by promoting scalable models for trade finance, export readiness, streamlined trade processes, and integration into global e-commerce platforms.



Date	Milestone / Activity
2025 Pre-summit	Secure partner endorsements and define launch governance
2025 Nov	Hand over the Special Report to the ICC implementation team for execution of key recommendations under their Trade-roots Africa initiative
2026	Expand MSME access to trade finance through blended and risk-sharing tools, build an integrated export pipeline linking support institutions, while harmonizing Simplified Trade Regimes to ease cross-border trade.

“The report provides innovative solutions drawn from some of the successful case studies to address the identified barriers”

- **Busi Mabuza**
Chair of B20 Trade & Investment taskforce

Partners & contributors



How to engage

Ullas Marar

Head
ICC Centre of Entrepreneurship
Ullas.MARAR-ext@iccwbo.org

We welcome engagement from public and private partners through joint investment in program delivery or knowledge and resource partnerships that can accelerate the scale and impact of these initiatives.

ICC Centre of Entrepreneurship: TradeRoots Africa

Unlocking African SME potential through trade

Initiative at a glance

Building from the B20 Special Report on Inclusive Trade, TradeRoots Africa boosts African SMEs' export readiness through training, AfCFTA awareness, and financing access, linking entrepreneurs to international markets via ICC's global network.

Core activities

- Launch TradeRoots Africa during B20 South Africa Summit (Nov 2025)
- Deliver pan-African knowledge series on export readiness and AfCFTA
- Operate SME accelerator with regional chambers and ICC offices
- Host workshops and virtual roadshows on compliance and finance access
- Pilot innovative financing showcases with African banks
- Engage at least 1,000 SMEs (mix of women-led and youth-led enterprises comprising 50% of the participants) in the first cohort

Why it matters

African SMEs make up more than 80% of businesses yet only about 20% participate in cross-border trade. Limited export readiness, insufficient access to working capital and trade finance, and weak integration into global value chains constrain their growth. These barriers undermine inclusive development and weaken regional economic resilience.

Partners & contributors



How to engage

Ullas Marar

Head
ICC Centre of Entrepreneurship
ullas.marar-ext@iccwbo.org

Milestone & timeline

Date	Milestone
2026 Q1	Launch pan-African knowledge series on export readiness; onboard first SME accelerator cohort; host AfCFTA regional workshops; pilot innovative SME financing options
2026 Q2	Deliver accelerator sessions on market entry, trade facilitation, and digital tools; provide targeted export support; and connect SMEs with trade partners
2026 Q3	Expand financing showcase to blended and alternative instruments; hold regional roundtables to exchange insights
2026 Q4	Refine program based on participant feedback; identify new sectors and regions for expansion; publish learnings; define 2027 priorities and partnerships

"With SMEs generating over 80% of employment across Africa, making them export-ready is not just economic policy; it's a continental growth strategy. Every SME that crosses a border strengthens Africa's resilience, creates jobs, and builds the foundation for shared prosperity."

- **John W.H. Denton AO**,
Secretary General, International Chamber of Commerce

ICC is working with the B20 South Africa Trade & Investment Task Force to build the knowledge base for the initiative (Special Report on Inclusive Trade). We are engaging with B20 Partners: AfCFTA, AfDB, AUDA-NEPAD, ABSA, amongst others regarding financial support.